

The Laurel  
Foundation

# ANNUAL REPORT

2025



Empowering At-Promise Youth and Families

# WELCOME

FROM THE BOARD CHAIR & CEO



To The Laurel Foundation Community,

What an incredible year it has been! 2025 marked one of The Laurel Foundation's most impactful years yet, filled with growth, community, and the transformative power of compassion. Together, we provided cost-free programs that reached hundreds of youth and families, empowering them to build confidence, develop leadership skills, and discover their authentic selves. From our resident camps, day camps, and leadership programs, each moment reflected the heart of our mission to help every child see their strength, their worth, and their potential.

In 2025, we expanded our population served to include young people at risk of HIV, while continuing to serve youth and families impacted by HIV/AIDS and transgender/gender-diverse youth, to ensure all vulnerable youth had access to mental health support, outdoor experiences, and a safe space to simply be themselves.

Our volunteers, donors, and staff came together to create unforgettable memories, from high ropes to campfires, that truly changed lives. As we look ahead, I am filled with gratitude and hope. The Laurel Foundation's mission remains steadfast: to create vibrant communities where at-risk youth are empowered and discover their authentic selves. Thank you to every camper, camper family, volunteer, Board member, and supporter who made 2025 extraordinary. You are the reason our community continues to shine so brightly.

With gratitude,

A handwritten signature in black ink that reads "Mark Moralez". The signature is fluid and cursive.

Mark Moralez  
(he/him)  
Chair of the Board

A handwritten signature in black ink that reads "Margot Anderson". The signature is cursive and elegant.

Margot Anderson  
(she/her)  
Founder/CEO

# ABOUT US

## WHAT ARE OUR VALUES?

Founded in 1993, The Laurel Foundation's cost-free educational and support camp programs impact the lives of over 462 transgender / gender-diverse youth, and vulnerable youth at risk of HIV each year. Our programs are a powerful antidote to the challenges of living with an illness or facing social isolation issues, by improving the well-being of the youth, bringing a sense of hope and joy to those we serve.

### MISSION

The mission of The Laurel Foundation is to empower children, youth, and families to thrive in environments built on trust, integrity, and mutual respect, creating compassionate, confident leaders.

### PURPOSE

The Laurel Foundation creates vibrant communities where youth are empowered to discover their authentic selves.

### VISION

Our vision is a world where all are seen, valued, and never alone.

### VALUES

- **Compassion** – We lead with empathy and kindness, creating a nurturing environment where every person feels seen, supported, and cared for.
- **Inclusion** – We celebrate diversity and ensure all youth, especially those from marginalized communities, feel welcomed, valued, and have a true sense of belonging.
- **Respect** – We honor each individual's voice, identity, and lived experience, fostering a culture of trust, dignity, and mutual understanding.
- **Equality** – We are committed to equity and access, ensuring every youth has the same opportunity to grow, thrive, and reach their full potential.

# PROGRAMS

## WHAT WE DO



The Laurel Foundation serves at-risk youth, including transgender/gender-diverse youth, youth at risk of or impacted by HIV/AIDS, and their families. Together, we celebrate our unique strengths, find joy in connection, and nurture each person's extraordinary potential. The Laurel Foundation serves youth (6-17) from all over the United States at our year-round, cost-free programs.

### Camp Laurel

Resident camps for youth and families at-risk or impacted by HIV/AIDS.



### Camp Mulberry

Resident camps for transgender/gender-diverse youth.



### Day Camps

Educational and support day programs for transgender/gender-diverse youth and youth at-risk or impacted by HIV/AIDS

### Life Skills

Educational and career focused day events.

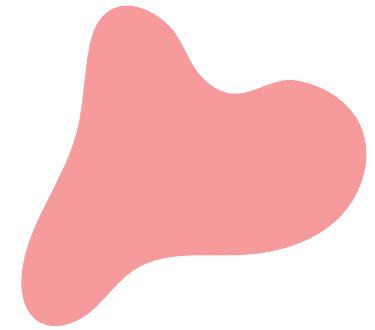
### Partnerships

Programs in partnership with local community organizations.



# OBJECTIVES

## WHAT ARE OUR VALUES?



Our programs create safe, inclusive spaces that support each participant's physical, mental, and emotional well-being. Through these programs, participants gain the tools and confidence to build healthy, self-sufficient, and meaningful lives.

“My child was beaming when we picked them up from their first year at camp.”

- Camp Mulberry Parent



## HEALTH

To improve mental and physical health through various year-round educational and support programs



## LEADERSHIP

Teach skills that foster confidence, empathy, responsibility, and the ability to inspire others through teamwork, communication, and authentic self-expression.



## CHARACTER DEVELOPMENT

Youth learn to identify their needs, set healthy boundaries, and confidently advocate for themselves in educational, social, and personal settings.

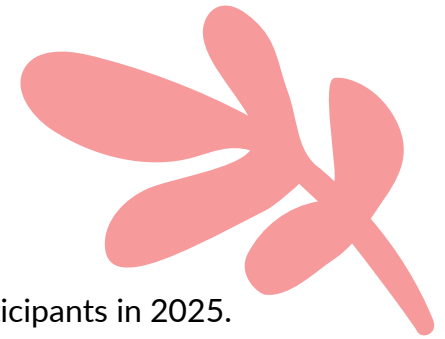


## COMMUNITY

Through community, we build compassion and balance, empowering youth to rise above adversity, realize their potential, and serve others with strength

# OUR CLIENTS

BY THE NUMBERS



The Laurel Foundation provided comprehensive educational and support programs to over 462 participants in 2025.



**16,832** | PROGRAM HOURS

**462** | PARTICIPANTS SERVED



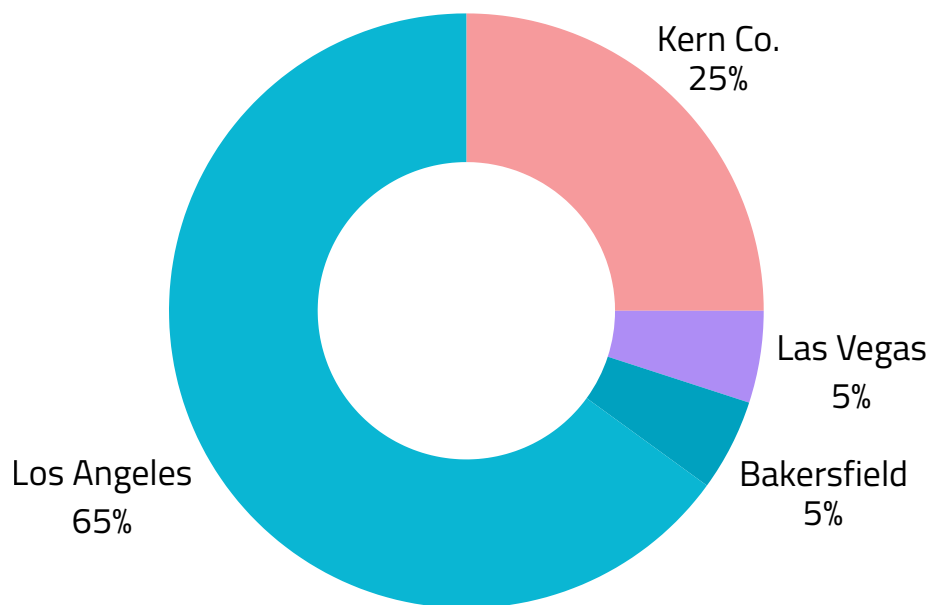
# OUR CLIENTS

WHERE OUR CAMPER COME FROM

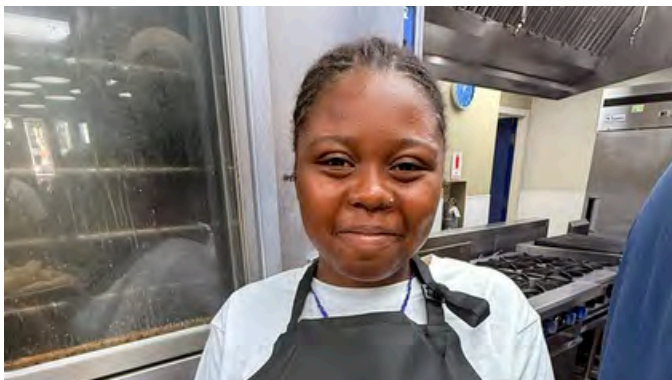
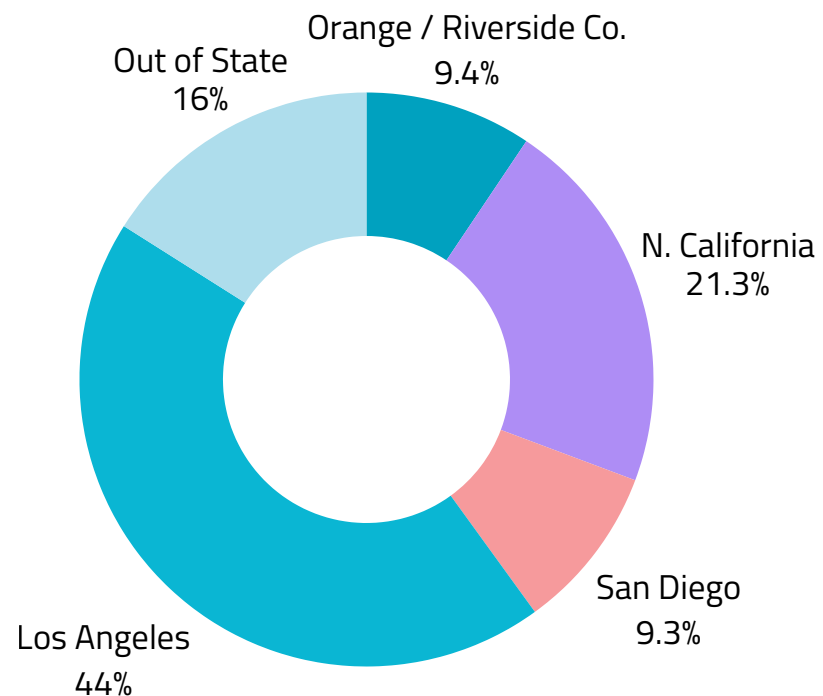
5

STATES REPRESENTED

## CAMP LAUREL



## CAMP MULBERRY



# CAMP MULBERRY

## REPORT



*“She was beaming with happiness. It makes her excited about the future, not only to maintain friendships with other campers, but she also wants to return as a counselor someday.”*

*- Camp Mulberry Parent*

The Laurel Foundation’s mission was brought to life through Camp Mulberry 2025, serving 70 transgender and gender-diverse youth ages 6–17. Over one transformative week, campers experienced a safe, affirming environment where they could explore their identities and build meaningful connections. As a result, participants showed increased self-confidence, stronger peer relationships, and a deeper sense of belonging, key outcomes supporting their mental health and well-being.

Through outdoor activities, team-building, and daily gratitude circles, campers developed communication skills, resilience, and trust in themselves and others. Many shared that they felt truly seen and supported, with some using their chosen names and pronouns in a fully affirming space for the first time. Returning campers also demonstrated long-term impact, growing into confident leaders preparing to mentor others. A workshop led by Leo Marmol further supported emotional expression through creativity.

Offered at no cost, Camp Mulberry is made possible by 45 dedicated volunteers, including medical and mental health professionals, who create a safe and nurturing environment. The 2025 program delivered lasting impact, equipping youth with confidence, connection, and the tools to thrive beyond camp, made possible through the continued support of donors and community partners.

# CAMP LAUREL

## REPORT



*I picked up a more confident child  
who wanted to spend time with  
the family for the first time*  
- Camp Laurel Parent.



Camp Laurel Teen Adventure 2025 delivered strong outcomes for youth ages 13-17 from marginalized communities, including those from low-income households, LGBTQ+ youth, youth in foster care, and those affected by or at risk of HIV/AIDS. By the end of the program, participants showed increased confidence, stronger peer connections, and a clearer vision for their futures. Through service learning, campers assembled over 250 care packages for families impacted by local fires, building empathy, leadership, and a sense of purpose.

The program's emphasis on college and career readiness resulted in tangible skill development. Campers gained knowledge about higher education pathways, explored diverse careers, and created polished résumés that reflected their strengths and goals. Workshops and hands-on experiences helped youth connect their interests to real-world opportunities, laying the foundation for future internships and continued growth.

Equally important, campers learn about HIV prevention and how to build healthy relationships. By the camp's end, campers reported feeling supported, seen, and part of a true community. Many experienced milestone moments that reduced isolation and strengthened belonging. Youth left with increased resilience, practical tools, and the confidence to pursue their goals, positioning them as future leaders and changemakers.

# DAY CAMPS

## REPORT



The Laurel  
Foundation

*I love camp because I can enjoy myself without being judged.*  
– Camp Mulberry Camper

Throughout the year, The Laurel Foundation hosted seven-day camp programs that brought campers and their families together in community, strengthening self-esteem and connection beyond the summer months. These gatherings provided consistent touchpoints of support, helping youth feel seen, valued, and part of a year-round network of care.

Programs focused on education, celebration, and emotional support—critical elements for youth who often face isolation and limited access to safe, affirming spaces. By creating opportunities for learning, joy, and connection, these events reinforced positive identity development, built resilience, and strengthened family bonds, all of which are essential for long-term well-being and success.

Programs included the Holiday Party, Halloween Party, Spring Into Camp, Camper Reunion, and Fencing Program, each designed to bring joy, build skills, and deepen the sense of belonging that defines The Laurel Foundation community.

# LIFE SKILLS

## REPORT

The Laurel  
Foundation



*I belong here.*  
- Camp Mulberry Camper



The Laurel Foundation's Life Skills Conference served 30 participants, providing a hands-on, impactful experience focused on preparing them for future success.

Sponsored by Citi National Bank, SEADE Coaching and Consulting, and WebPower USA, the program delivered interactive workshops on financial literacy, resume writing, job interview preparation, and pathways to college and trade schools.

As a result, participants gained practical, real-world skills, increased confidence in their ability to pursue higher education and career opportunities, and a stronger understanding of financial responsibility.

By learning directly from industry professionals, youth left the conference with tangible tools, clearer goals, and the leadership confidence needed to take the next steps toward a brighter future.

# PARTNERSHIPS

## REPORT

*I love camp because it gives a sense of belonging and community.*  
- Camp Laurel Camper



The Laurel Foundation strengthens its impact through partnerships with local community corporations such as Paramount Studios and UCLA Pediatric AIDS Coalition, expanding access to education, career exposure, and critical health information for the youth we serve.

In 2025, Paramount Studios invited the youth to participate in a hands-on HIV education workshop, creating a digital animated HIV prevention video. This experience increased their knowledge of HIV prevention while building confidence, creativity, and technical skills.

Through our longstanding partnership with UCLA Pediatric AIDS Coalition, we continued to host programs like our Life Skills workshops, helping youth explore college and trade school pathways, develop career readiness skills, and build confidence in their future.

# OUTCOMES

WHAT WE ACCOMPLISHED IN 2025



95%

Increase

**INDEPENDENCE**

5% growth

100%

Increase

**SELF ESTEEM**

11% growth

97%

Increase

**COMMUNICATION**

8% growth

100%

Increase

**COMMUNITY**

12% growth

85%

Increase

**ADVOCACY**

4% growth



# VOLUNTEERS

COMMITMENT BY THE NUMBERS



Our volunteers are at the heart of our programs, giving not just their time and energy but creating lasting, life-changing impact.

## VOLUNTEERS



# 12,822

## VOLUNTEER HOURS IN 2025

## ETHNIC DIVERSITY



We believe in recruiting a diverse group of volunteers that reflects the many different backgrounds of the children, youth and families we serve.

**141** | PROGRAM AND FUNDRAISING VOLUNTEERS

**68%** | RETURNING VOLUNTEERS

**10%** | INCREASE IN VOLUNTEERS



# OUR PEOPLE

## BOARD OF DIRECTORS & STAFF

### BOARD OF DIRECTORS

**MARK MORALES** (he/him) - CHAIR OF THE BOARD  
CEO - The Printing Palace

**MISCHA HARAMIA** (she/her) - SECRETARY  
Entertainment Practice Director, Henderson  
Engineers

**JOE CRISTINA** (he/him) - TREASURER  
Founder, Children Affected by AIDS Foundation

**MARGOT ANDERSON** - CEO  
Founder / CEO, The Laurel Foundation

**INES NASRI** (she/her) - TRUSTEE  
Head, WebPower USA LLC

**DR. SHINDALE SEALE** (she/her) - TRUSTEE  
CEO, SEADE Coaching & Consulting LLC

**LISA STANGL, MSN, CPNP** (she/her) - TRUSTEE  
HIV Specialist, UCSD Mother, Child and Adult HIV  
Program

### STAFF

**MARGOT ANDERSON** (she/her)  
aka **MAVERICK**  
Founder / CEO

**ELIOT DOWENS** (he/him)  
aka **CRICKET**  
Director of Volunteers and Administration



“  
*Everyone is nice, and it was  
the best time of my life.*  
- Camp Mulberry Camper  
”

# OUR DONORS

## WE COULDN'T DO IT WITHOUT YOU

### CORPORATE/FOUNDATIONS

A3 Visual  
 AIDS WALK LA  
 Alan Nahmias  
 Albertsons  
 Angel Flight West  
 Bar Cecil Palm Springs  
 Bickerstaff Foundation  
 Blackburn Studios  
 Bonhams  
 Born This Way Foundation  
 Bradford Studios  
 Broadway Cares  
 Citi National Bank  
 City of Palm Springs  
 City Watch LA  
 Collaborative House  
 Copper Giants  
 Dave's Mobile Detailing  
 David Geffen Foundation  
 Del Ray at Villa Royale  
 Desert Island Country Club  
 Desrt Willow Golf Resort  
 ECC  
 Eddie V's  
 Escena Golf Course  
 Fernando Diaz & Associates  
 FLP Law Group  
 Gay 4 Good  
 Gilead Sciences  
 Golden State Foods Foundation  
 Grace Helen Spearman Foundation  
 Haritha Jewelry  
 Henderson Engineers  
 Immersive Art Collective  
 Jeffrey Towns

JJill & Tom Barad  
 Joanie & Leigh's Cakes  
 Johnny Carson Foundation  
 Joseph Cristina AIDS Fund  
 Kendra Scott  
 KGay  
 Kimpton Hotel  
 LA Compost  
 LA Conservancy  
 La Crema  
 LA Dept. of Mental Health  
 LA Pride  
 Let's Party LA  
 Madeup By Su  
 Mali + Lili  
 Margulies Faith LLP  
 Marrakesh Country Club  
 Marshack Hays Wood Attorneys at Law  
 Mattel  
 Melissa Webb  
 mistr  
 Natalie Sofer Weddings and Events  
 Nothing Bundt Cakes  
 Opt Optometric  
 Otto Caps  
 Palm Springs Art Museum  
 Paradise Diaz & Associates  
 Paramount Studios  
 Pasadena School of Rock  
 Perfect Body by Sujey  
 Personal Training by Jodi Marchuck  
 Qualcomm  
 Queens Care Foundation  
 Quixote  
 RAP  
 ReDiscover Center

Relentless Pursuit Therapy and Consulting  
 Revelry Event Designers  
 Robb Whittlef  
 Robert Nieto  
 Ryan Campbell  
 Rowley Studios  
 S. Mark Taper Foundation  
 Sam and Ashan Leslie  
 Saguauo Palm Springs  
 SEADE Coaching and Consulting  
 Shine Pro Window  
 Shutters on the Beach  
 Skin Sense  
 Shulman Bastian Friedman & Bul LLP  
 Silver Lining  
 SkinSense Wellness  
 Social Change  
 Sonoma Private Wealth  
 Stretto  
 Tegan and Sara Foundation  
 The Pantry at Holiday House  
 The Printing Palace  
 The Westin Rancho Mirage  
 Titos  
 Tom Ballou & Joe Antonio Orozco  
 Total Wines  
 UCLA Pediatric AIDS Coalition  
 Urban Objects  
 WebPower USA LLC  
 Would Works  
 Z Butcher Shop  
**ARTISTS / ART DONORS**  
 Aaron Kramer  
 Alicia Berger

Alicia Savio  
 Aubrey Longley-Cook  
 Ayin Es  
 Bradley Atkinson  
 Bradley Atkinson  
 Caroline Pintoff  
 Cherie Harte  
 Chris Fucile  
 Clare Elsaesser  
 Claudia Concha  
 Courtney Herron  
 Dale Voelker  
 David Bender  
 Denise Pauly-Hovey  
 George Lamie  
 Gio Black Peter  
 Gregg Chadwick  
 Gregory Malphurs  
 Hank Lumen  
 Michael Van  
 Heidi Libera  
 Jake Trujillo  
 esse Green  
 Joe Hyatt  
 Johannes Gustafsson  
 John Ramseier  
 Jon Leafstedt  
 Julian A. Kramer  
 Jun Yang  
 Patrick Thurlbeck  
 Kiley Ames  
 Kimberly Adamis Fongheiser  
 Kory Alexander  
 Krikor Tchay  
 David Krovblit

Kyle Andrew Steed  
 Laurel Holloman  
 Lenin Solano  
 Leonardo E. Marmol  
 Luc Bernard  
 Maja Planinac  
 Manel Anoro  
 Martin Baran  
 Mary Elizabeth  
 Marvin Matt Devine  
 Michelle Liles  
 Norrel Blair  
 Ordered Chaos  
 Patrick N Brown  
 Patrick Walsh  
 Peter Carr  
 Philip Monaghan  
 Rainer Hosch  
 RF. Alvarez  
 Rick Mordesovich  
 Ron Azevedo  
 Sam Culp  
 Samuel Fleming Lewis  
 Shannon Zembriski  
 Tanmay Kaushik Parashar  
 Thomas Arvind  
 Timothy Mutzel  
 Tony Pharo  
 Valery Povski  
 Vania Astorga  
 William J. O'Brien  
 Willow Lynne Evans



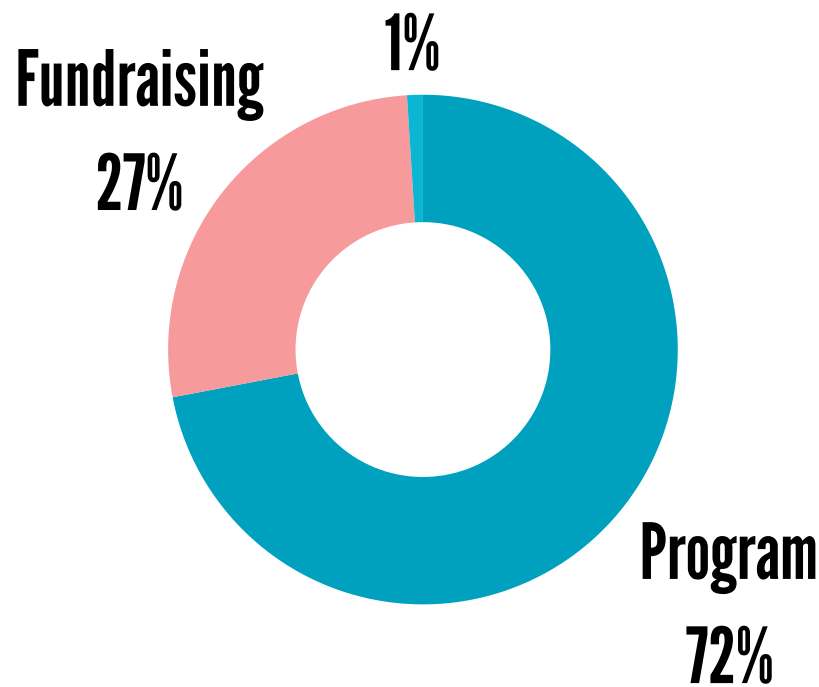
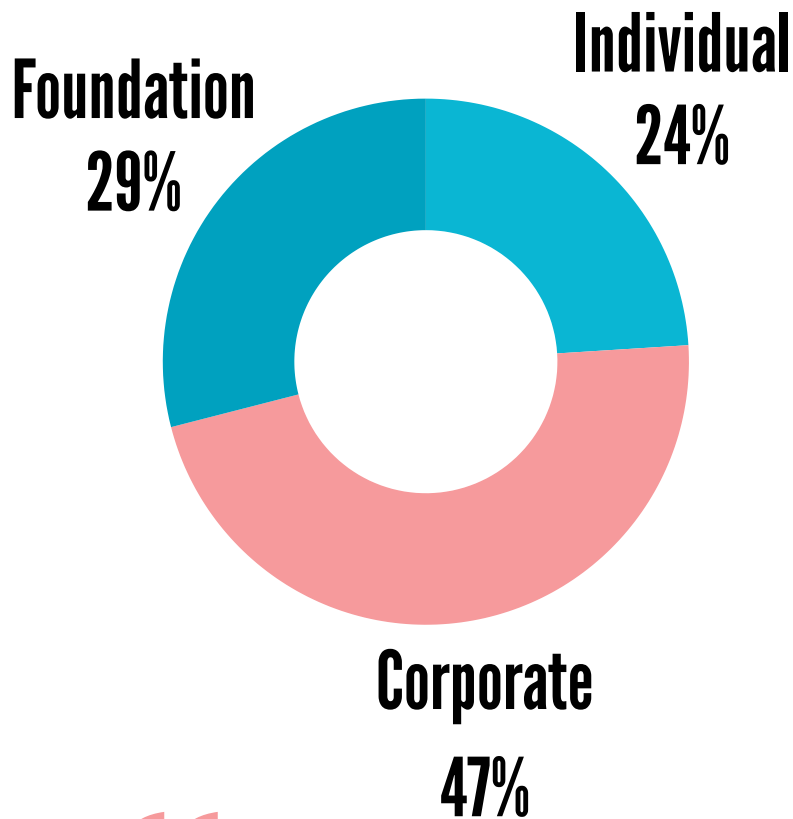
# FINANCIALS

YOUR GIFTS MAKE THE DIFFERENCE

## INCOME

## EXPENSES

### Administration



“

*I have watched so many beautiful trans kids realize they can reach their dreams and blossom into leaders. Camp gives them the community and support they need.*

*- Camp Mulberry Counselor*

”





75 S. GRAND AVE., PASADENA, CA. 91105  
TEL: 626-683-0800 | INFO@LAUREL-FOUNDATION.ORG  
EIN#: 95-4429260

DONATE

